

# **Teacher Practices**

## **to Discourage Unproductive Student Behaviors**

Lolita Paff, PhD  
Penn State Berks

**International Society for Exploring Teaching & Learning**  
ISETL 2015 Conference, Savannah GA

# Roundtable Objectives

- Identify a short list of student behaviors that inhibit learning.
- Explore intended & unintended consequences of policies.
- Learn through discussion: practices that help students mature as learners.
- Leave with at least one strategy to implement in your course.



# What are the problems?

1. In your experience, what behaviors most negatively impact student learning?
2. What negative behaviors do you find most difficult to address?





# You Are Not Alone!

## Historical Literature

- Rightmire (1930)
- Arnoldy (1955)
- Karner (1965)
- Marwardt & Sikkink (1970)



# Policies are necessary but...

- Policies don't teach students why the behavior hurts their learning
- Policies are mostly reactive
- Harsh policies encourage fraudulent excuse-making
- Highly specific policies encourage loophole-finding
- Policies don't support efforts to become self-directed learners



# Policy Considerations

- Tone
- Rationales
- Policy Framing
- Shared Decision-Making



# Discussion



<https://docs.google.com/document/d/1zINFCbkzHz33erLUnc0l8f-jvmne8xo3dEblx-L9h40/edit?usp=sharing>





# Promoting Self-Efficacy

## Shared Decision-Making

- Class norm statements
- Mutual expectations

## Reflective Questions

- Learning strategies
- Coping skills





# Promoting Readiness for Class

- Teacher Modeling
- SMART Goals
- Contract Grading



# Discussion



<https://docs.google.com/document/d/1zINFCbkzHz33erLUnc0l8f-jvmne8xo3dEblx-L9h40/edit?usp=sharing>





# Promoting Attendance

- Culture of Valued Attendance
- Teacher Immediacy
- Data & Feedback
- Limit Snowballing
- Discussions



# Discussion



<https://docs.google.com/document/d/1zINFCbkzHz33erLUnc0l8f-jvmne8xo3dEblx-L9h40/edit?usp=sharing>





# Discouraging Technology Distractions

- Scheduled Breaks
- Pick Up The Tab
- Distraction Exercise
- Tech-Based Assignments
- High Risk Characteristics



# Discussion



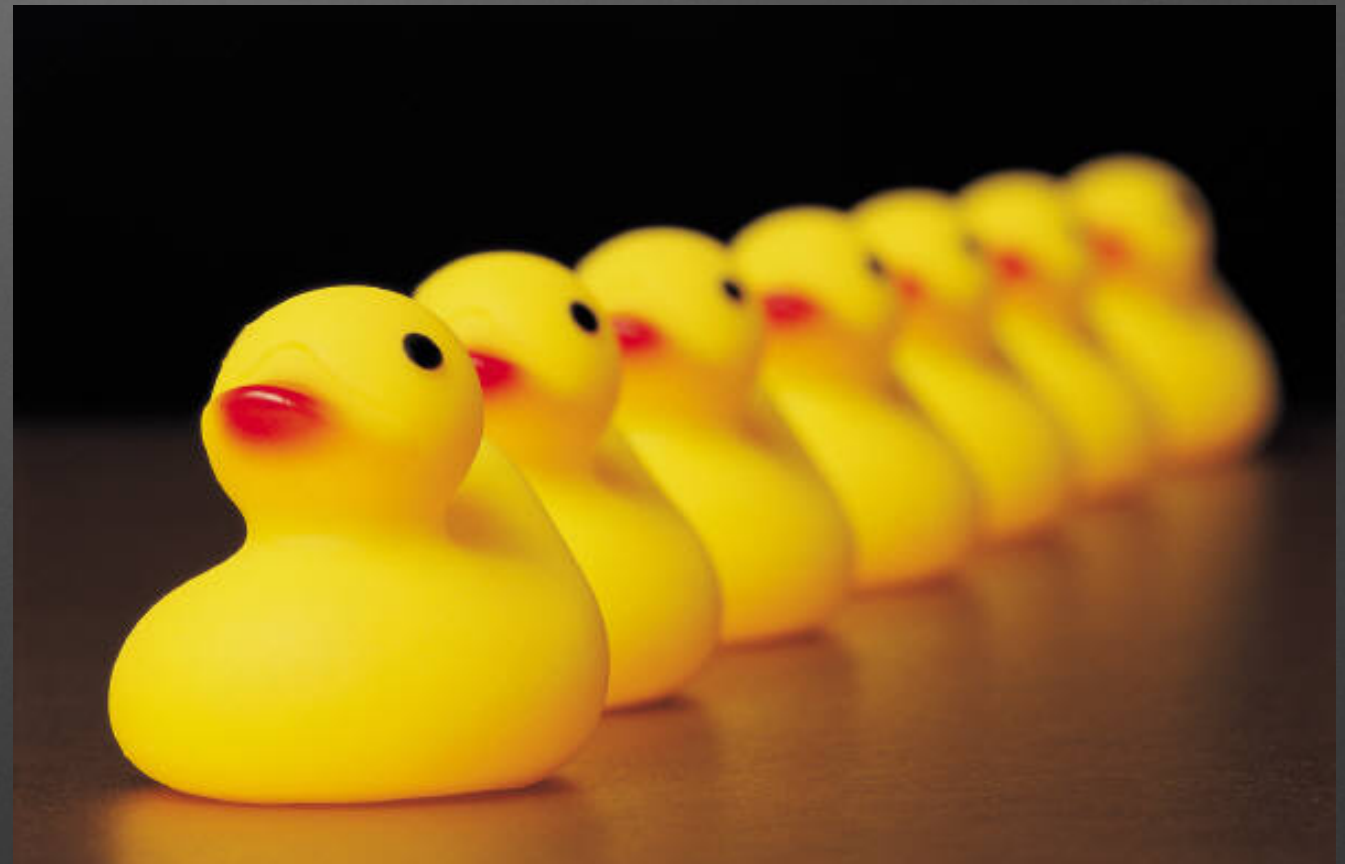
<https://docs.google.com/document/d/1zINFCbkzHz33erLUnc0l8f-jvmne8xo3dEblx-L9h40/edit?usp=sharing>





# Discouraging Procrastination

- Start Assignment in Class
- Assign Student-Created Project Plans
- Identify Task Characteristics
- Manage Perfectionism
- Issue Reminders



# Discussion



<https://docs.google.com/document/d/1zINFCbkzHz33erLUnc0l8f-jvmne8xo3dEblx-L9h40/edit?usp=sharing>





*Policies are necessary.*

*It's important for students to understand what is expected of them and the consequences when they fall short.*

*But to develop students as independent and mature learners, teachers need to go beyond policies,*

*to employing strategies and practices that allow students to learn from their behaviors, not just suffer the consequences.*



*Thank you!*

***Lolita Paff***

***Penn State Berks***

***Email: [LAP21@psu.edu](mailto:LAP21@psu.edu)***

***Blog: <http://bit.ly/PaffBlog>***

***Website: [www.lolitapaff.com](http://www.lolitapaff.com)***